

JENSEN PARK ESTATES - PHASE ONE

A SUBDIVISION IN SECTION 28, TOWNSHIP 37 SOUTH, RANGE 41 EAST, MARTIN COUNTY, FLORIDA.

UNPLATTED

CLERK'S RECORDING CERTIFICATE

I, Louise V. Isaacs, Clerk of the Circuit Court of Martin County, Florida, hereby certify that this plat was filed for record in Plat Book 8, Page 30, Martin County, Florida, public records, this _____ day of _____, 1980.

LOUISE V. ISAACS, CLERK
CIRCUIT COURT
MARTIN COUNTY, FLORIDA

By: _____ Deputy Clerk

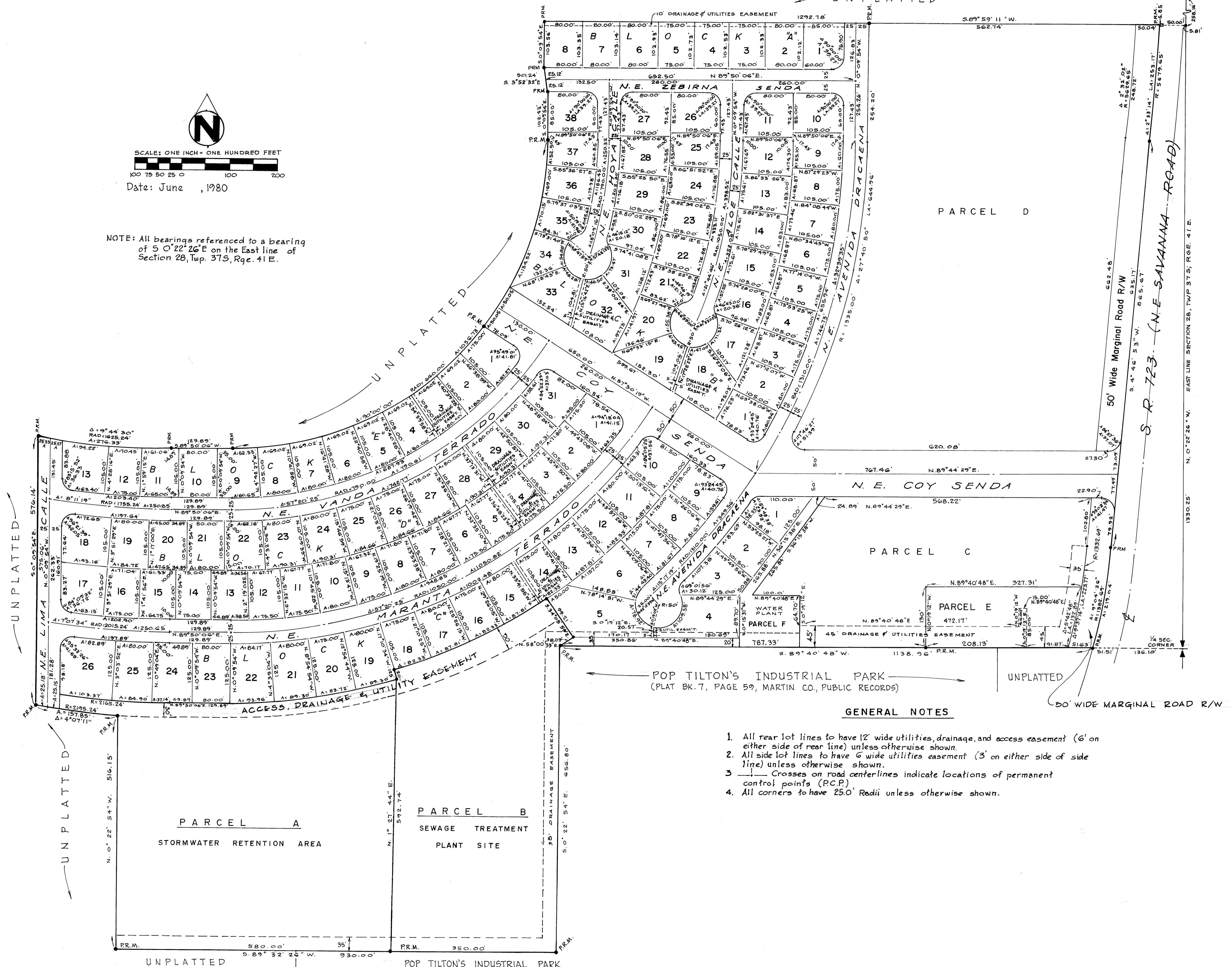
File No: _____



SCALE: ONE INCH = ONE HUNDRED FEET

Date: June , 1980

NOTE: All bearings referenced to a bearing of $S 0^{\circ} 22' 26'' E$ on the East line of Section 28, Twp. 37S, Rge. 41E.



POP TILTON'S INDUSTRIAL PARK
(PLAT BK. 7, PAGE 59, MARTIN CO., PUBLIC RECORDS)

GENERAL NOTES

1. All rear lot lines to have 12' wide utilities, drainage, and access easement (6' on either side of rear line) unless otherwise shown.
2. All side lot lines to have 6' wide utilities easement (3' on either side of side line) unless otherwise shown.
3. ——— Crosses on road centerlines indicate locations of permanent control points (P.C.P.)
4. All corners to have 25.0' Radii unless otherwise shown.

UNPLATTED
580.00' 5.89° 32' 26" W. 930.00'
POP TILTON'S INDUSTRIAL PARK